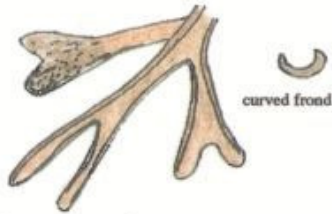
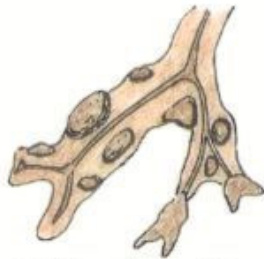


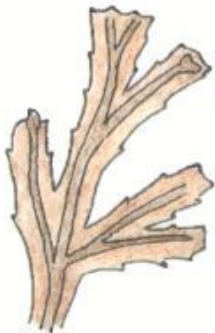
COMMON SEAWEEDS OF THE BERWICKSHIRE COAST



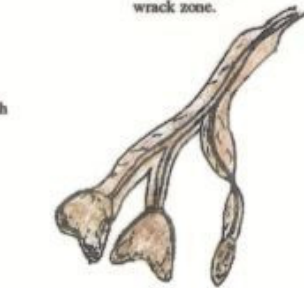
Channeled wrack (brown) 15 cm.
Upper shore, highest wrack - occurs just beneath the high water mark



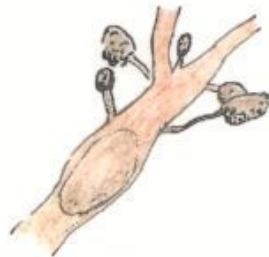
Bladder wrack (brown) 100 cm.
Middle shore, very variable.



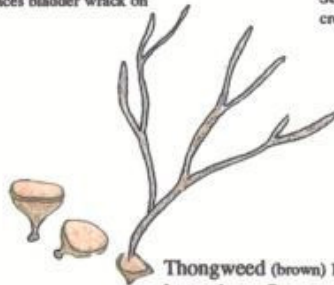
Toothed wrack (brown) 60 cm.
Lower shore.



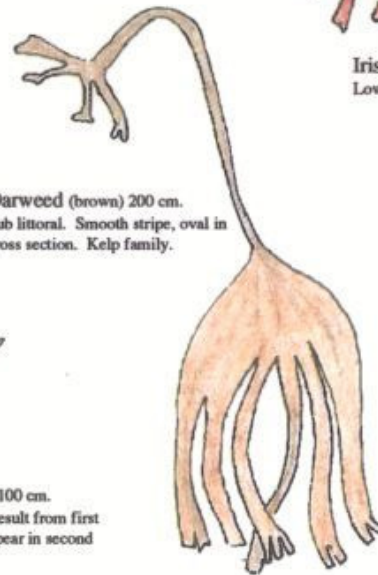
Spiral wrack (brown) 30 cm.
Upper shore, just below channelled wrack zone.



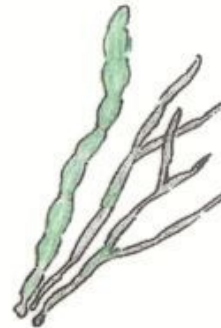
Knotted wrack (brown) 100 cm.
Middle shore - Replaces bladder wrack on sheltered shores.



Thongweed (brown) 100 cm.
Lower shore.. Buttons result from first years growth, thongs appear in second year.



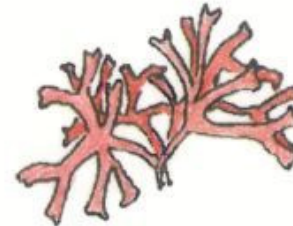
Oarweed (brown) 200 cm.
Sub littoral. Smooth stripe, oval in cross section. Kelp family.



Enteromorpha (green) 30 cm.
Mainly upper shore. Early coloniser but often short lived.



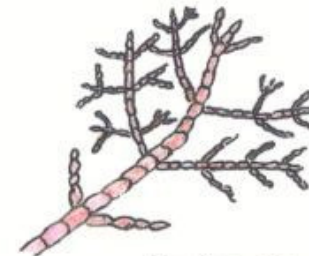
Sea Lettuce (green) 20 cm.
Whole shore.



Irish Moss (red) 15 cm.
Lower shore.



Dulse (red) 30cm.
Lower shore, often on kelp.



Corralina (red) 12cm
Forms turfs in rockpools and on lower shore. Has a chalky skeleton.