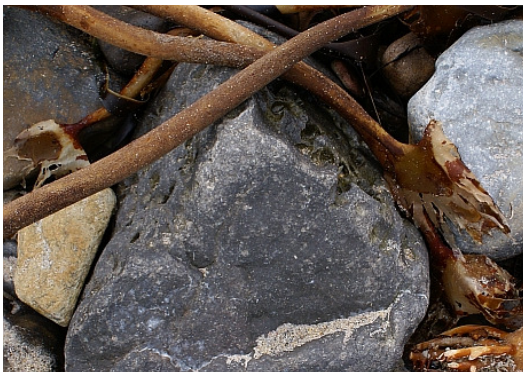


Creative Adventure: Zoom-in photography challenge

Get up close and personal to the world, using a camera or just your eyes. Try this zoom-in photo trail or make your own.

Try our photo trail

Can you find things that look like this? As an extra challenge, can you work out what they are? And if you have a camera, take your own photo of something similar?



Why not make your own trail?

Getting started

Make sure you use a digital camera so you can upload your photos to a computer and then design a trail for lots of people to use. You don't need an expensive camera. Many mobile phone cameras have a zoom facility.

Decide on a place to go that you know other people (your friends, family or classmates) will be able to visit easily.

Take pictures of things that aren't too difficult for people to find. Try to include a variety of things, including evidence of animals, plants, geology and manmade things.

Don't take too many photos! Take a moment to plan each one:

- Look at different views of the thing you have chosen to capture. Squat down, lean over it, walk round it. Look for the most interesting parts.
- If your camera, has a 'macro' or 'close-up' mode try switching it on.
- Get as close as you can to the subject before you begin to zoom in with your camera. This is a good tip anytime, not just when you're taking close-up photos.

Before you press the button, look at the image.

- Is anything getting in the way?
- Is it going to be too dark or bright?
- Check that the image hasn't gone out of focus. You may need to move back a bit or zoom out a bit and try again.

Design your trail

Upload your photos to a computer and do a first edit. This means, deleting the dud ones and selecting the ones you want to use for your trail.

You could then

- Save and copy them just as they are into a Word document, adding some text to make your trail
- Use a photo editing tool to make them look better first. Try using GIMP, Photoshop Elements or Magic Photo. Your photos might look better if you crop them into squares or experiment with different border shapes. You could also make them more difficult to find by changing the colour or distorting them.
- Create your trail online, using a photo site such as Flickr, Picasa or Photobucket. If you use Flickr you could upload your photos to the Flickr group for Our Coast Our <http://flickr.com/groups/northumberlandcoasts>